



**Anybus<sup>®</sup>**  
**RemoteCom<sup>™</sup>**

## **M2M Remote Device Management Solutions**

Simplifying remote visualization and control  
of industrial devices and machinery

# Simplify remote device management with the powerful and easy-to-use Anybus® RemoteCom™

With Anybus RemoteCom, HMS Industrial Networks introduces a complete new product series for remote visualization and control of industrial devices and in M2M applications. RemoteCom enables remote management of industrial equipment from a standard web browser. By providing fast and accurate information at any time and place, RemoteCom helps to minimize equipment downtime, unnecessary travel of service personnel, helping to secure our natural environment. Typical applications include remote management and control of factory and process automation devices, generator power stations, water and waste water management, as well as, heating and ventilation equipment in building automation.

## Multi-purpose web gateway for industrial devices and machinery

Anybus RemoteCom is an easy-to-use web gateway. It acts as a Modbus bridge and gives remote access and control of serial devices over Ethernet, Internet, LANs, GSM, GPRS and telephone modems.

### RemoteCom - Diagnostics

RemoteCom contains built-in features for alarm handling (SMS, E-mail, SNMP), data logging and web-based data access. RemoteCom has a powerful embedded webserver for visualization of the device data that can be accessed from any standard web browser. The user can easily

and securely access devices from anywhere at anytime.

### RemoteCom - Control

In addition to the visualization and diagnostic functions, RemoteCom provides the ability to remotely control devices. RemoteCom enables authorized users to select and modify device parameters such as, target values or operation mode.

### RemoteCom - Configuration

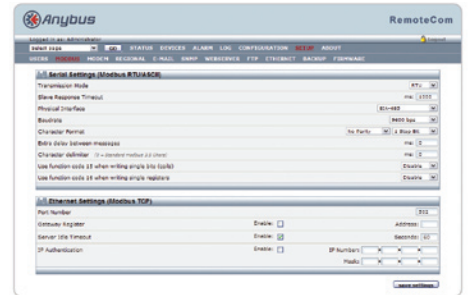
The network configuration of RemoteCom is easy and made via the inbuilt webserver. The webserver is also used to setup the serial Modbus connection to the industrial device or machinery. Pre-defined parameter templates supplied with RemoteCom ensures a fast and easy setup.



Anybus RemoteCom Internet/Ethernet version



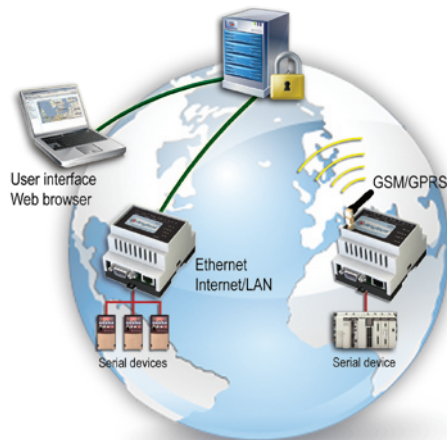
Anybus RemoteCom - Ethernet + GSM/GPRS wireless version



Screenshot showing the easy web setup and configuration of your connected devices via any standard web browser

## Anybus RemoteCom online management server expands your capabilities

As an additional service, a secure online management server is available that expands the functionality of Anybus RemoteCom. The server collects and stores logged data in one central location. Storing the data centrally, extends the logging period and makes it easier to access data of several devices without the need to establish an individual remote connection. At the server an authorized user can view and manage remote systems. The only tool the user needs is a standard web browser. A limited online service is included with the Anybus RemoteCom unit.

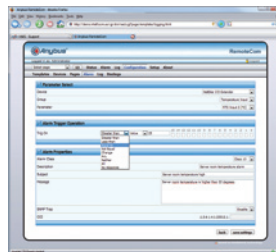
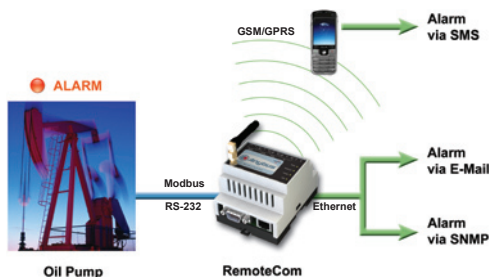


Storing the data online, extends the logging period and makes it easier to browse through the data of several devices without the need to establish an individual remote connection.

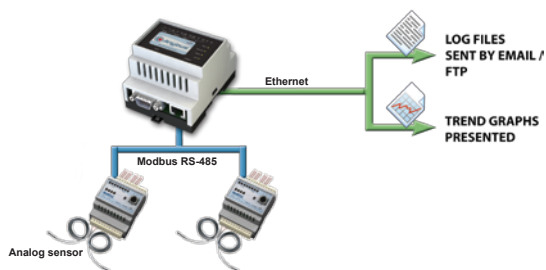
### WHY USE ANYBUS REMOTECOM?

- Setup your remote device management solution easily without any programming or additional windows tools
- Create professional trend graphs and data log tables based on easy to use templates
- Visualization AND remote control combined in one solution
- Choose between wireless or wired connections all providing the same functionality
- Instant connection to the very wide range of industrial devices with the Modbus interface
- The optional online management server provides easy access of several devices from one location
- Save travel time and energy and help to secure our natural environment

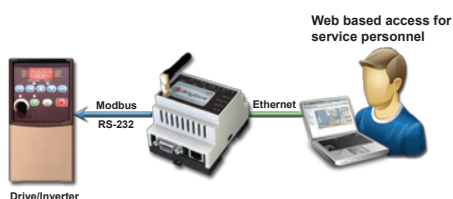
## Diagnostic, Visualization & Control Examples



Alarm notifications can be sent to service personnel by email, SMS and SNMP.  
Alarm conditions and trigger levels are easily configured through the built-in web server.



RemoteCom gathers and records data from several connected devices.  
The built-in web server presents historical data in the form of visual trend graphs.



The built-in web server gives the user easy access to live data. RemoteCom enables authorized users to select and define device parameters. For example, via a defined parameter RemoteCom changes the drive speed.

“RemoteCom gets you up and running quickly and smoothly with customizable pre-defined web templates.”

**Easy configuration and no programming required!**

### KEY FEATURES

- Monitoring and control of industrial devices and machinery using a standard web browser
- Communication over Internet, LAN's, GSM, GPRS or telephone modems
- Alarm management by email, SMS or SNMP
- Alarm history accessible via the built-in web server
- Built-in acquisition logger and trend graphs
- Easy-to-use web based configuration  
No Windows tools or HTML editors needed
- Supports transparent bridging of Modbus data
- Serial protocols: Modbus RTU, Modbus ASCII, (master operation)
- RS-232 interface with full hardware modem control signals
- Ethernet protocols: Modbus TCP master/slave, HTTP, SMTP (Email), FTP, Telnet, SNMP, DHCP
- Ethernet 10/100 Mbit/s
- 2x onboard digital inputs (24V)
- Possibility to add an antenna extension for GSM/GPRS version
- Multi language web interface (English, Swedish, German, French, Spanish are pre-installed)
- No licenses or royalties
- Optional usage of online central management server for extended functionality

### MECHANICAL SPECIFICATION

- Size: 90 x 70 x 58 mm (Plastic)  
3.54" x 2.76" x 2.28" (Plastic)
- Size: 92 x 115 x 25 mm (Metal)  
3.62" x 4.53" x 0.98" (Metal)
- Power Supply: 9-28V DC
- Power Consumption: 2W (3W GSM/GPRS)
- Operating temperature: -40°C to +85°C (-40°F to + 185°F)
- Mechanical rating: IP20
- Mounting: DIN-rail (Plastic)  
Wall mounting (Metal version only)
- Conformance: CE, UL pending
- RoHS compliance

# Anybus RemoteCom Ordering Information



Order code	AB7705	AB7706	AB7707
Anybus RemoteCom type	Ethernet/Web	Ethernet/Web Metal	Ethernet/Web + GSM/GPRS
Ethernet baud rate	10/100 Mbit/s	10/100 Mbit/s	10/100 Mbit/s
GSM/GPRS	-	-	YES
SIM card slot (SIM card not included)	-	-	YES
Serial port #1 (D-sub, full modem supported)	RS-232	RS-232	RS-232
Serial port #2 (Screw terminal)	RS-232 / RS-485	RS-232 / RS-485	RS-232 / RS-485 / RS-422
Serial port baud rate	Up to 115,2 kbit/sec	Up to 115,2 kbit/sec	Up to 115,2 kbit/sec
Serial port protocols (Master operation)	Modbus RTU, ASCII	Modbus RTU, ASCII	Modbus RTU, ASCII
Type of housing	Plastic, 4 modules, IP20	Metal, IP20	Plastic, 4 modules, IP20
DIN rail / Wall mounting	YES / NO	YES / YES	YES / NO
Mechanical dimensions	90mm x 70mm x 58mm	92mm x 115mm x 25mm	90mm x 70mm x 58mm
Operating temperature	-40 to +85 deg °C	-40 to +85 deg °C	-30 to +65 deg °C
Power supply	9-28V AC/DC	9-28V DC	9-28V DC
Power consumption	2W	2W	3W

## Scope of supply

Anybus RemoteCom is supplied with the following accessories:

- Installation leaflet
- Log-in details for online service
- CD with:
  - Web design templates
  - IP config software
  - Manuals

Anybus® RemoteCom™  
Designed and manufactured in Sweden



## About HMS

HMS Industrial Networks is the leading independent supplier of network technology for automation devices. HMS develops and manufactures solutions for interfacing automation devices to industrial networks.

Development and manufacturing takes place at the head office in Halmstad, Sweden. Local sales, support and training is provided by the branch offices in Chicago, Beijing, Karlsruhe, Milan, Mulhouse and Tokyo and by a global distribution network spanning 30 countries. HMS employs over 150 people and is reporting sales of over €30 million. HMS is a public listed company on the NASDAQ OMX Nordic exchange in Stockholm, ISIN-code: SE0002136242

For more information please visit:

[www.anybus.com](http://www.anybus.com)

### Sweden (HQ)

Tel: +46 (0) 35 17 29 00  
Email: [sales@hms-networks.com](mailto:sales@hms-networks.com)  
[www.anybus.com](http://www.anybus.com)

### Germany

Tel: +49 (0) 721 96472-0  
Email: [info@hms-networks.de](mailto:info@hms-networks.de)  
[www.anybus.de](http://www.anybus.de)

### Italy

Tel: +39 (0)39 59662 27  
Email: [it-sales@hms-networks.com](mailto:it-sales@hms-networks.com)  
[www.anybus.it](http://www.anybus.it)

### France

Tel: +33 (0)3 89 32 76 76  
Email: [fr-sales@hms-networks.com](mailto:fr-sales@hms-networks.com)  
[www.anybus.fr](http://www.anybus.fr)

### USA

Tel: +1 312 829 0601  
Email: [us-sales@hms-networks.com](mailto:us-sales@hms-networks.com)  
[www.anybus.com](http://www.anybus.com)

### Japan

Tel: +81 (0) 45 478 5340  
Email: [jp-sales@hms-networks.com](mailto:jp-sales@hms-networks.com)  
[www.anybus.jp](http://www.anybus.jp)

### China

Tel: +86 (0) 10 8532 3183  
Email: [cn-sales@hms-networks.com](mailto:cn-sales@hms-networks.com)  
[www.anybus.cn](http://www.anybus.cn)

Anybus® is a registered trademark of HMS Industrial Networks AB, Sweden, USA, Germany and other countries. Other marks and words belong to their respective companies. All other product or service names mentioned in this document are trademarks of their respective companies.

Part No: MM00015 Version 1 10/2008 - © HMS Industrial Networks - All rights reserved - HMS reserves the right to make modifications without prior notice.